

Invensys Metering Systems-North America Inc.

SR® AND SR II® WATER METERS INSTALLATION GUIDELINES

1. Meter is intended for measuring potable, cold water in one direction only.
2. Meter is to be installed in a horizontal pipeline with the register facing upward and readily accessible for reading.
3. Suitable shut-off valves should be installed adjacent to both the inlet and outlet of the meter so service may be shut off without undue inconvenience to the customer whenever the meter must be removed.
4. Clean and flush the service line thoroughly on the inlet side of the meter before installing the meter.
5. Remove the spud thread protectors and set the meter with the arrow on the meter pointed toward the outlet (customer's side).
6. To insure unrestricted flow of water through the meter, use the proper size and type of gaskets. Connections should only be sufficiently tightened to seal; *do not over-tighten*. Do not use pipe sealant, tape or putty on the meter spud threads.
7. After the meter is installed, shut the *outlet* shut off valve. Open the inlet shut off valve *slowly* until the meter is full of water and there are no leaks.
8. Open the outlet valve *slowly* until air is out of the meter and service line. Open a valve downstream of the meter *slowly* and insure that no foreign debris in the water obstructs the operation of the meter.

CAUTION: Introducing water too quickly into the meter will damage the meter's internal components. The meter and service line must be free of air before operating the meter at normal flow rates.

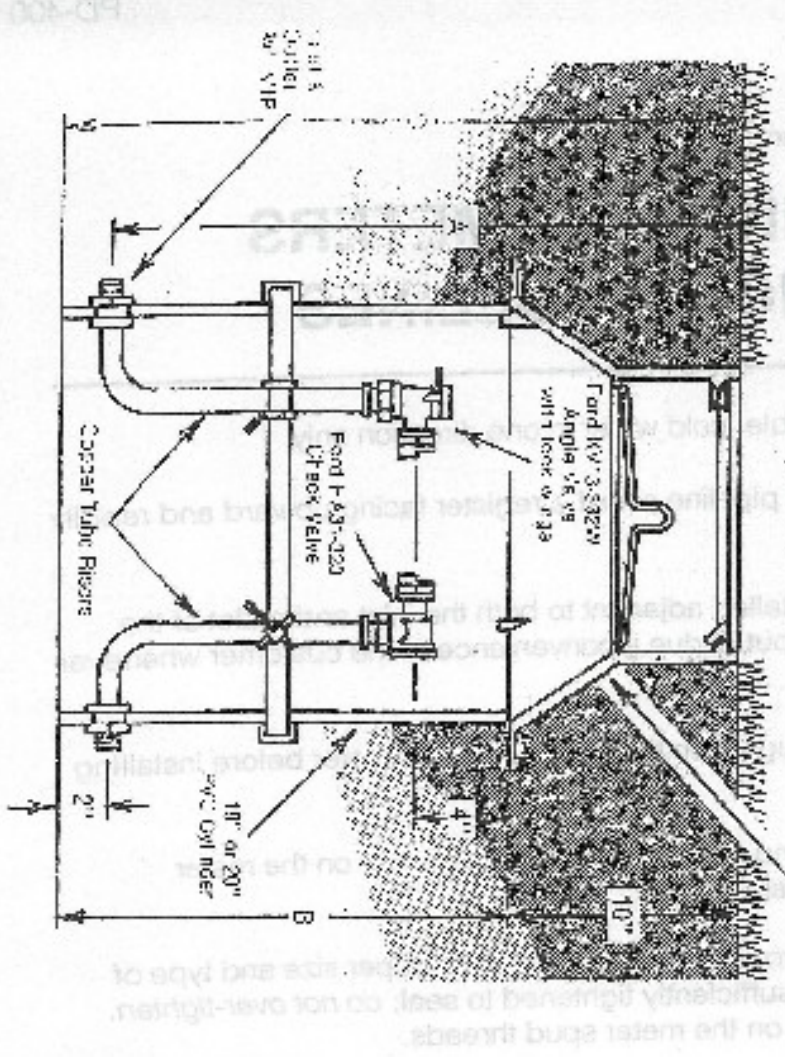
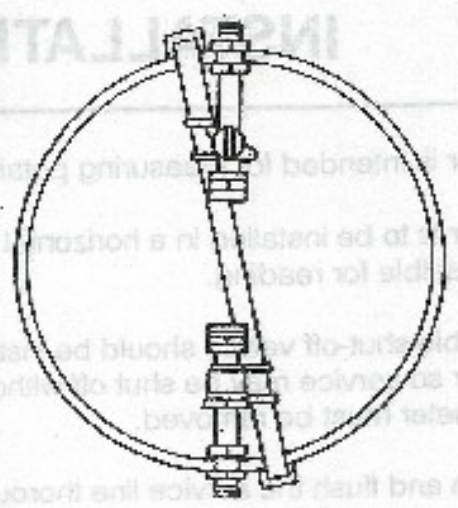
9. Install an electrical grounding strap around the meter for maintenance safety while repairing or removing meter.

NOTE: For additional details, refer to the Sensus Water Meter Installation & Operating Instructions or the American Water Works Association (AWWA) Manual M6.

If the meter to be installed requires the installation of a remote, follow the applicable installation guide.

FOR THE USE OF THE VETERAN SETTING
 Job Line Type

THE FORD METER BOX CO., INC.
 4600 Ash, Indiana 46932



NOTE: For additional details, refer to the instructions or the American Water Works Association (AWWA) Manual M8.

CAUTION: Introducing water into the meter will damage the meter's internal components. The service line must be free of air before operating the meter at normal flow.

3. Open the outlet valve slowly until the meter slowly starts to operate. The operation of the meter downstream of the meter slowly starts to operate.

4. Open the outlet valve slowly until the meter slowly starts to operate. The operation of the meter downstream of the meter slowly starts to operate.

5. Install an electrical grounding wire and ground the meter for maintenance safety when repairing or removing the meter.

6. Install an electrical grounding wire and ground the meter for maintenance safety when repairing or removing the meter.

Setting Total Depth "C"	P.V.C. Cylinder Length "D"	Normal Setting Depth "A"
36"	22"	3"
30"	14"	4"
24"	10"	5"
18"	6"	6"