

Invensys Metering Systems-North America Inc.

## SR® AND SR II® WATER METERS INSTALLATION GUIDELINES

---

1. Meter is intended for measuring potable, cold water in one direction only.
2. Meter is to be installed in a horizontal pipeline with the register facing upward and readily accessible for reading.
3. Suitable shut-off valves should be installed adjacent to both the inlet and outlet of the meter so service may be shut off without undue inconvenience to the customer whenever the meter must be removed.
4. Clean and flush the service line thoroughly on the inlet side of the meter before installing the meter.
5. Remove the spud thread protectors and set the meter with the arrow on the meter pointed toward the outlet (customer's side).
6. To insure unrestricted flow of water through the meter, use the proper size and type of gaskets. Connections should only be sufficiently tightened to seal; *do not over-tighten*. Do not use pipe sealant, tape or putty on the meter spud threads.
7. After the meter is installed, shut the *outlet* shut off valve. Open the inlet shut off valve *slowly* until the meter is full of water and there are no leaks.
8. Open the outlet valve *slowly* until air is out of the meter and service line. Open a valve downstream of the meter *slowly* and insure that no foreign debris in the water obstructs the operation of the meter.

**CAUTION:** Introducing water too quickly into the meter will damage the meter's internal components. The meter and service line must be free of air before operating the meter at normal flow rates.

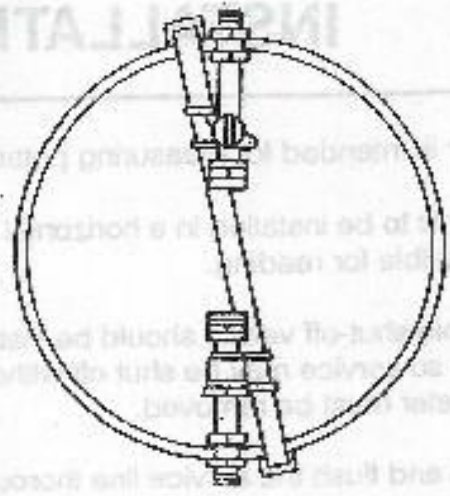
9. Install an electrical grounding strap around the meter for maintenance safety while repairing or removing meter.

**NOTE:** For additional details, refer to the Sensus Water Meter Installation & Operating Instructions or the American Water Works Association (AWWA) Manual M6.

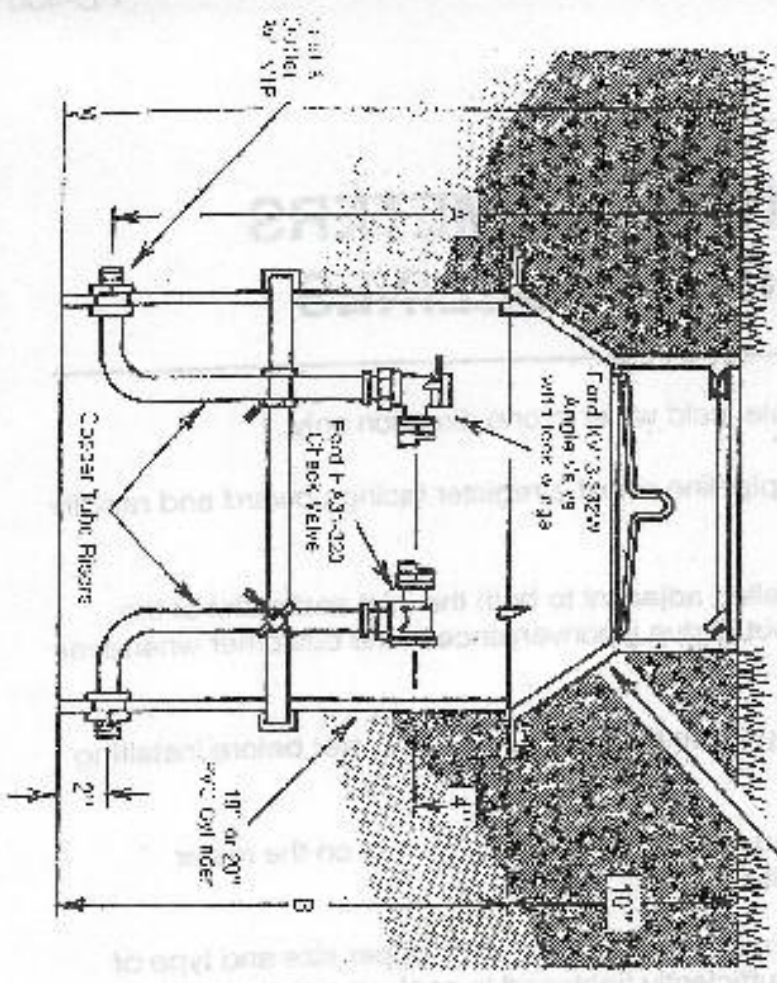
If the meter to be installed requires the installation of a remote, follow the applicable installation guide.

SECTION SETTING AND WATER SETTING  
 One Line Type

THE FORD METER BOX CO., INC.  
 Woburn, Indiana 46992



Ford W-22 or W-2 Double  
 L. S. Cover



	Nominal Setting Depth "A"	PVC Cylinder Length "B"	Setting Total Depth "C"
3 Ft. Satter	3"	22"	35"
4 Ft. Satter	4"	40"	50"
5 Ft. Satter	5"	38"	52"
5 Ft. Satter	6"	42"	54"

**CAUTION:** Introducing water into the meter assembly may damage the meter. The meter is not to be operated in the presence of water.

**NOTE:** For additional details refer to the instructions or the Association (AWWA) Manual M8.

After the meter is installed, the cut-out valve. Open the inlet cut-off valve. Slowly fill the meter with water until the meter is full of water and there is no leak.

Open the outlet valve slowly until the water is full of water. Close the outlet valve. Turn the water and meter box. Open a valve. Check the operation of the meter. The meter should be full of water and there is no leak.

Repeat or removing the meter. The meter should be full of water and there is no leak.

Install an electrical ground wire. The meter should be full of water and there is no leak.

If the meter is to be installed in a trench, follow the appropriate instructions.